

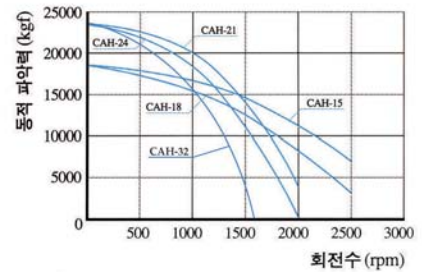
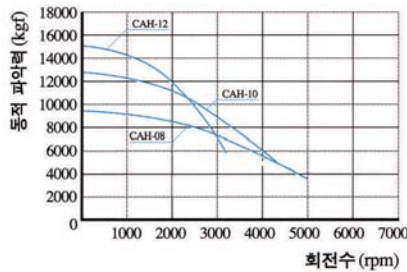
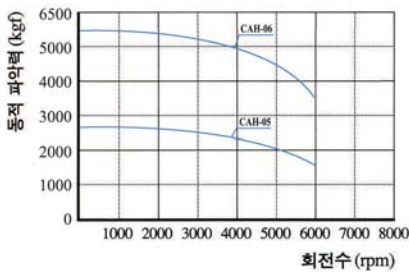
# CAH

고속중공형 파워척  
BIG BORE POWER CHUCK  
高速中空型パワーチャック / 大通孔動力卡盘



- 높은 파악력    • 고속화 실현    • 경량화 실현    • 내구성 확보
- High Gripping Force    • High Speed    • Light Weight    • Durability
- 高い把握力    • 高速化実現    • 軽量化実現    • 耐久性確保
- 夹紧力强    • 速度快    • 重量轻    • 耐磨损

## Dynamic Gripping Force / 동적夹紧力 / 動的把握力グラフ / 동적파악력 선도



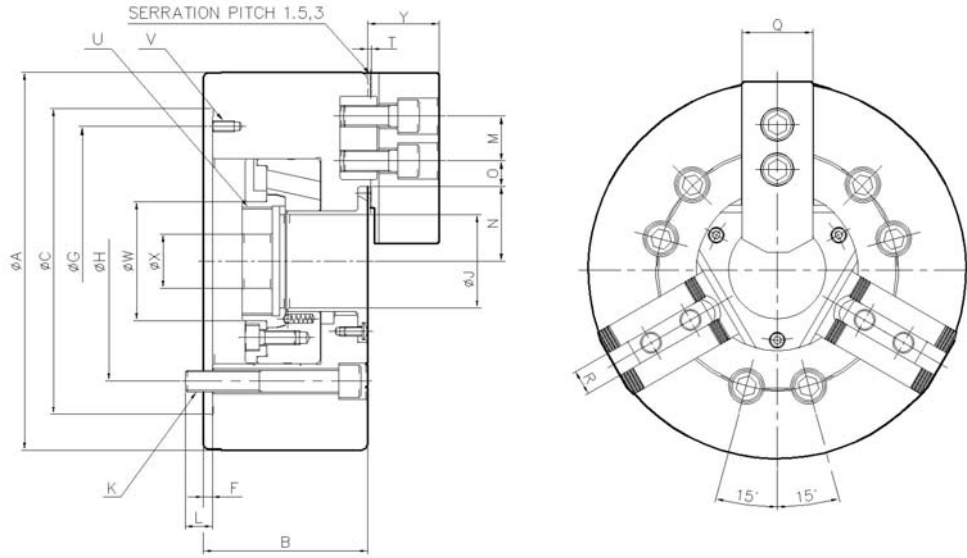
※ 척의 오랜 수명을 유지하기 위해 최소 일2회 이상 그리스를 주입하여 주십시오.  
※ It is recommended to grease chucks at least twice a day in order to maximize longevity.

## Specifications / 规格 / 仕様表 / 사양표

Spec.사양 Model형식	Order NO. 오더번호	Spindle nose NO. 주축규격	Thru-hole (Diameter) 관통경(직경) mm	Jaw stroke (Diameter) 조 스트로크(직경) mm	Plunger stroke 플런저 스트로크 mm	Gripping Dia(External gripping) 파악경(외경파악)mm		Max. permissible input force 허용실린더력 KN(kgf)
						Max 최대	Min 최소	
CAH-05	1AH05	-	33	5.4	10	135	10	175(1784)
CAH-06	1AH06	A2-5	46	5.5	13	169	13	25(2500)
CAH-08	1AH08	A2-6	52	7.6	18	210	11	40(4080)
CAH-10	1AH10	A2-8	77	8.5	20	254	31	50(5100)
CAH-12	1AH12	A2-8	91	10.2	24	304	34	58(5916)
CAH-15	1AH15	A2-11	118	10.6	23	381	30	71(7240)
CAH-18	1AH18	A2-11	118	10.6	23	450	30	71(7240)
CAH-21	1AH21	A2-11, 15	140	10.6	23	530	87	90(9177)
CAH-24	1AH24	A2-11, 15	165	10.4	23	610	110	90(9177)
CAH-32	1AH32	A2-15, 20	240	18	34	800	152	100(10193)

Spec.사양 Model형식	Max static grip ping force 최대 정적파악력 KN(kgf)	Max permissible speed 최고 사용회전수 rpm(min <sup>-1</sup> )	Weight (With standard soft jaws) 중량(표준소프트 조 포함) kg	GD <sup>2</sup> Moment of inertia N·m <sup>2</sup> (kgf·m <sup>2</sup> )	Matching cylinder 적용실린더	Matching hard jaw 적용하드 조	Matching soft jaw 적용소프트 프 조
CAH-05	36(3671)	7000	6.7	0.7(0.071)	YSH·YAH-05	HJ-04A1	SJ-05T1
CAH-06	63(6426)	6000	12.5	2.26(0.23)	YSH·YAH-06	HJ-06T1	SJ-06T1
CAH-08	94(9597)	5000	22.3	6.67(0.68)	YSH·YAH-08	HJ-08T1	SJ-08T1
CAH-10	125(12740)	4200	34.5	12.84(1.31)	YSH·YAH-10	HJ-10T1	SJ-10T1
CAH-12	147(15000)	3300	55.3	28.71(2.93)	YSH·YAH-12	HJ-12A1	SJ-12A1
CAH-15	180(18355)	2500	120	89.14(9.09)	YSH-15	HJ-15T1	SJ-15A1
CAH-18	180(18355)	2000	164	174.6(17.8)	YSH-15	HJ-15T1	SJ-15A1
CAH-21	234(23861)	1700	235	351.1(35.8)	YSH-15	HJ-21B1	SJ-21A1
CAH-24	234(23861)	1400	293	651.2(66.4)	YSH-15	HJ-21B1	SJ-21A1
CAH-32	240(24464)	1200	530	598.4(61)	YSH-21	-	-

Outward Drawing/外型图/外形图/외형도



Dimension/尺寸/寸法表/치수표

Item No. Model	A	B	C	F	G	H	J	K	L	M	N max	N min
CAH-05	135	60	110	4	96	826	33	3-M10	15	14	26.5	23.8
CAH-06	169	80	140	5	116	104.8	46	6-M10	12	20	33.5	30.7
CAH-08	210	91	170	5	150	133.4	52	6-M12	15	25	41.7	37.9
CAH-10	254	100	220	5	190	171.4	77	6-M16	17	30	54.5	50.3
CAH-12	304	115	220	6	190	171.4	91	6-M16	18	30	67.4	62.3
CAH-15	381	133	300	6	260	235	118	6-M20	30	43	82	76.7
CAH-18	450	133	380	6	320	235	118	6-M20	30	43	82	76.7
CAH-21	530	140	380	6	330.2	330.2	140	6-M22	34	60	98.5	93.2
CAH-24	610	149	380	6	330.2	330.2	165	6-M22	32	60	108.4	103.2
CAH-32	800	150	520	6	463.6	463.6	240	6-M24	31	38	153.5	144.5

Item No. Model	O max	O min	P max	P min	Q	R	S	T	U max	V	W	X	Y	Z
CAH-05	19.75	7.75	1	-9	23	10	20	2	M40X1.5	3-M6	45	20	26	54
CAH-06	23	10	12	-1	31	12	19	2	M55X2.0	3-M6	60	20	33	72
CAH-08	27	10	16.5	-1.5	39	14	20.5	2	M60X2.0	3-M6	66	30	39	95
CAH-10	31	12	9.5	-10.5	44	16	27	2	M85X2.0	3-M8	94	30	46	110
CAH-12	42	12	10	-14	50	21	28	2.5	M100X2.0	3-M8	108	30	51.8	111
CAH-15	43.8	18.3	11	-12	62	22	39	5	M130X2.0	3-M10	139	60	70	165
CAH-18	73.8	18.3	11	-12	62	22	39	5	M130X2.0	3-M10	139	60	70	165
CAH-21	87.5	21.5	11	-12	65	25	39	5	M155X3.0	3-M12	170	80	73	180
CAH-24	117.5	21.5	20	-3	65	25	40	5	M175X3.0	3-M12	187	80	73	180
CAH-32	190.6	19.5	29	-5	75	25.5	40	10.4	M250X3.0	3-M12	260	80	83.6	160

※ 치수 및 사양은 예고없이 변경될 수 있습니다.  
 ※ Specifications are subject to change without notice.

Model Description/型号说明/型式番号表示/형식번호 표시

CAH □ - □□  
 Chuck Size  
 Blank | Standard  
 A | adapter type  
 T | 2-jaw type

CGH □ - □□  
 Chuck Size  
 Blank | Standard  
 A | adapter type  
 T | 2-jaw type

CAS □ - □□ A□  
 Chuck Size Spindle Nose  
 Blank | Standard  
 A | adapter type  
 T | 2-jaw type  
 D | Direct mount type